



NEW PATHS TO INCLUSION

Newsletter Nr. 3 / August 2011

PROJECT PARTNER:

Lebenshilfe Österreich (AT)
Fachschule für Sozialpädagogik Lensahn (DE)
Quip (CZ)
Helen Sanderson Associates - HSA (UK)
bidok (AT)
Inclusion Europe (EU)
Balance (AT)
Osthölsteiner Behindertenhilfe (DE)
Rytmus (CZ)
Lebenshilfe Südtirol (ITA)
Fondation A.P.E.M.H. (LUX)
Social Work Advisory Board (SK)
Universität Halle (DE)
queraum. cultural- & social research (AT)

New Paths to Inclusion - Thinking – Planning - Acting

Experiences in person centred planning , implications for the everyday life as well as the changes in organisations were the main topics of the EU project “New Paths to Inclusion” during the last months. The pilot-training for a future training course in person centred planning has been completed and cooperation for future networks have been initiated. Moreover, participants of the pilot-training act as ambassadors, actively transmitting their experiences to the public. Till autumn, the curriculum group continues to work on the completion of the future model course and its training-modules. The final results of the EU project will be published in September.

PREVIEW - Autumn 2011!

Vienna, 13 September, 2011

Final Conference in Austria

“New Paths to Inclusion - Person centred thinking, planning and acting”, with Helen Sanderson und Sam Bennett from HSA (GB).

Berlin, 7 – 8 October, 2011

Conference in Berlin “Thinking forward: Person centred planning”, with John O’Brien, a founder of person centred planning in the USA.

www.personcentredplanning.eu



FIND US ON FACEBOOK

Network of professionals
for Person Centred
Planning

<http://www.facebook.com/group.php?gid=148764128494223>



Lifelong Learning Programme

This project has been funded with support from the European Commission.

This publication reflects the views only of the author, and the Commission cannot be held responsible for any use which may be made of the information contained therein.

THINK AND ACT IN EUROPEAN TERMS

European Reflection Meeting

On 28th and 29th April, the New-Paths project partners met in Vienna to reflect on the results and outcomes of the project. To begin with, participants appreciated a site visit to Balance who hosted the meeting. Preliminary results of the evaluation were presented by Andreas Hinz who pointed out the high commitment of the project partners and the great success of the modules and multiplications courses.

Participants further discussed the final publication as well as dissemination of the project results. Project partners agreed to meet in the fringes of the Berlin conference in October to plan a follow up-project aimed at creating a European Network of PCP. Finally, internal evaluation based on the PCP approaches revealed considerable satisfaction with the good results of the project, high confidence in the method and great enthusiasm for future cooperation. After the meeting, the curriculum development group met to complete the model curriculum.

REVIEW

European Final Conference of the project New Paths to Inclusion in Cyprus

Experiences with person centred planning (PCP), implications for persons' situations and for changes in organisations were presented in NewPaths-Project's final conference (170 participants) in Larnaca (13 May, 2011). The event was held in cooperation with Inclusion Europe during its annual conference Europe in Action.



Aglaia Parth with her assistant Lisa Wimmeler focused on the experience of WIBS; pointing out that on the path to greater autonomy and inclusion, self-advocates are taking a stand for equal rights and treatment. In this process, personal future planning can help people to lead their lives as they please.

Julie Lunt from HSA explained the concept of PCP using Helen Sanderson's definition: "Person centred planning is a process of continual listening to and learning about what is important to the person in partnership with family and friends". This encompasses families and organisations supporting planning and thinking about the present and the future.

Besides, Julie Lunt described the impulse of "Valuing People" in the UK (2001), which stated: "Every person with a learning disability should have a person centred plan if they wish." Examples of the

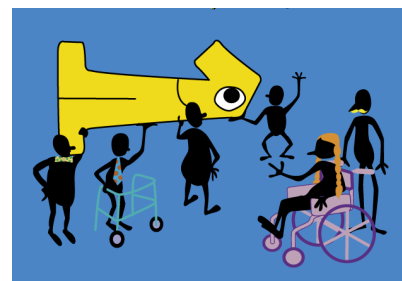


Image by WIBS: Together we are strong

methods PATH and MAPas well as a personal story of a PCP user completed this introduction to the set of methods and approaches of PCP.

Julie Lunt further explained that the first six modules of the project enabled participants from six project countries to initiate the planning process, create and develop circles of support and work on individual person-centred plans with the person, thus supporting them to live included in the community. The final multiplication modules focused on participants becoming ambassadors in their countries to share their learning and build on their practice. "To sum up, this project has enabled the participants to develop person centred planning with people and families and support organisations considering to make their services respond to people in a more person centred way. These approaches aim to help people who have a personal budget to plan their support."

Example: This is a visual image of the review. Led by a facilitator, all participants in the review can record information on the posters placed on the walls. This is done in a relaxed atmosphere where the person and their family feel comfortable and everyone gets their say.

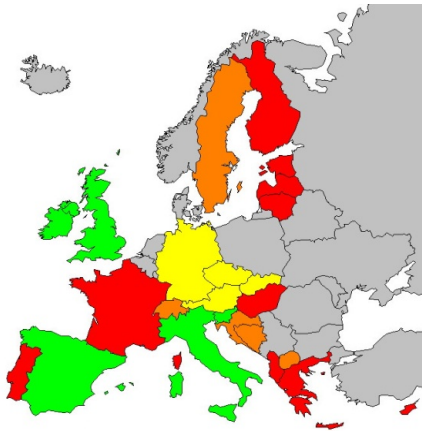


Andreas Hinz presented the findings of the evaluation which confirmed the high quality of the courses and multiplication settings, trust in the method as well as the high commitment of the participants. The results of the European questionnaire show clearly that the method is known and used in several countries, whereas others remain blank spaces on the European map of PCP. There is still a lot to do in research, networking and training.

After the plenary, participants could deepen their understanding of PCP in three workshops focused on methods, experiences and perspectives of organisational change. In all the workshops, the main tools of PCP were used as examples of finding ways for individuals, families and organisations to change essential aspects of their daily lives and orientations.

In the closing plenary together with representatives of the European Parliament, Cyprus based organisations and the membership of Inclusion Europe; Geert Freyhoff, Director of Inclusion Europe, presented six key recommendations in favour of PCP:

1. To promote person centred approaches in all European countries.
2. Person centred approaches should be used in all support services.
3. To inform families and stakeholders about person centred approaches.
4. To promote legislation based on person centred approaches in European countries.
5. To invite speakers from The New Paths to Inclusion Project to share learning in European countries.
6. Supporters and professionals should use person centred approaches in their daily work.



Level 1: PCP is not used
Level 2: PCP is only used in small projects or by some people
Level 3: PCP is in use, and a network is establishing or already established
Level 4: PCP is included in policies

Ambassadors of PCP: Multiplication course completed



After Bratislava, future ambassadors of PCP completed their multiplication course in Prague in April 2011. Participants deepened their knowledge of methods and reflected on the role of trainers and moderators. Finally, certificates were given to the successful future trainers and moderators.

NEWS FROM AUSTRIA

„How person centred planning works“, Public Transfer Platform in Vienna

Once again, more than 100 persons came in April to the Public Transfer Platform in Vienna. Title of the successful event was “How person centred planning works”.

Within the EU project “New Paths to Inclusion”; self-advocates, relatives, service-providers and specialists tested the training modules for a future training course in person centred planning. On 14 April, the training-participants presented their experiences and course contents for the first time. The main topics of the course were person centred thinking, planning and acting. Practical experience was an important element of this pilot-training - each participant had to take part in a person centred planning process. Karin Mair, a graduate of the course, explained: “For me the main conclusion from this training course is that all people with disabilities have the right to a person centred plan, if they wish- including people with severe disabilities. Not least because person centred methods increase self-determination and inclusion.

After the successful pilot training the education modules will be offered as regular training in Austria. The concept will be elaborated by the end of the year.

CALENDER OF EVENTS

Vienna, 13 September, 2011

Final Conference in Austria

“New Paths to Inclusion - Person centred thinking, planning and acting”, with Helen Sanderson and Sam Bennett from HSA (GB).

Berlin, 7 – 8 October, 2011

Conference in Berlin “Thinking forward: Person centred planning”, with John O’Brien, a founder of person centred planning in the USA.

Event programmes and information you will find in German versions here:

Downloads & Events

www.personcentredplanning.eu

Contact:

Lebenshilfe Österreich, Förstergasse 6, A-1020 Vienna

Phone: ++43/1/812 26 42 – 72, email: heindl@lebenshilfe.at

If you do not wish to receive the newsletter „New Paths to Inclusion“, please send an e-mail to fortbildung@lebenshilfe.at. Thank you!

